

Intermap Technologies® provides 3D terrain information to enable commercial enterprises and government agencies to make better terrain-based decisions. We are committed to helping geospatial professionals from all industries leverage our products and services so they can increase productivity and decrease costs.

MISSION AND HISTORY

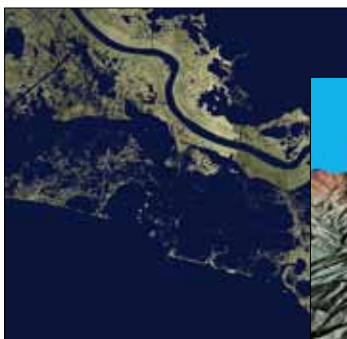
Intermap's® rich history in digital mapping and geospatial services began in 1974 by a team of radar engineers and scientists, many of whom continue to contribute to the development of our technology and award-winning production system. Intermap was founded in 1997 with employees and operations worldwide that serve a diverse geospatial marketplace. We're proud to be consistently recognized in the geospatial industry as a leading provider of 3D mapping solutions. For more than three decades, we have helped customers solve their mapping challenges with our superior geospatial services and NEXTMap® 3D terrain products.

Advanced technologies and a commitment to innovation are the backbone of our company. With the leadership and vision of our executive team and contribution of our employees and partners, Intermap will be among the first to commercialize broad access to the best-of-breed 3D terrain information. Our goal is to become the go-to company for aggregating and disseminating the best-available 3D terrain information for the world. We are the industry leader in processing geospatial data and integrating data derived from a number of different technologies. We aggregate the best-available 3D terrain information from third parties into our NEXTMap database and then disseminate it through a web-based delivery mechanism to provide instant access via affordable and flexible subscription options.

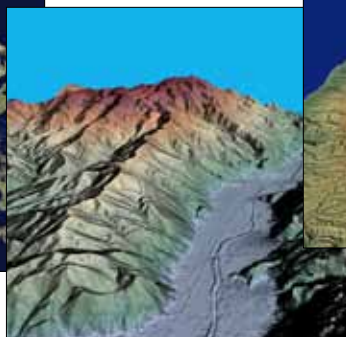
SUPERIOR 3D TERRAIN SOLUTIONS

Our 3D terrain information enables our customers to build a wide variety of innovative geospatial applications and efficiently perform analyses. Industries such as energy, engineering, government, risk management, telecommunications, water resource management, and automotive can benefit from our high-quality products and geospatial services.

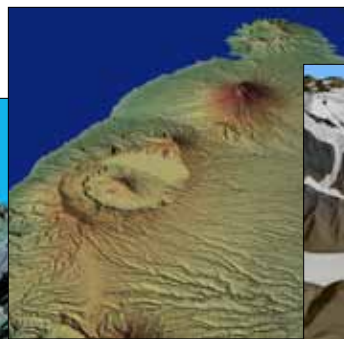
Our NEXTMap products include readily available, seamless, wide-area, and current 3D terrain data that have been processed and edited to produce accurate data that satisfies your geospatial needs. Intermap's web services allow you to easily subscribe and access the 3D terrain data you need for your area of interest, when you need it. We also provide comprehensive geospatial services, including custom 3D mapping services, data fusion, and online GIS tools that produce terrain-based answers. Whether your project requires readily available terrain data, easy-to-use online tools, or a custom service, we can help you find a solution.



ORI of Mississippi Delta with multi-spectral imagery.



5m-resolution DTM of Piemonte, Italy.



DSM in shaded relief of Bali, Indonesia.



Visualization using a 5m-resolution DEM of Trident Glacier, Alaska.



TLM of Mud River, West Virginia.

PUT OUR EXPERTISE TO WORK FOR YOU

When you work with us, you will benefit from our:

- Advanced technologies and highly skilled team
- Seamless, wide-area, and current NEXTMap 3D terrain information
- Geospatial services to suit your needs
- Award-winning production system
- World-class, ISO-certified geospatial processing facility
- Worldwide network of partners with industry expertise

As the world's first nongovernmental organization to collect, process, and deliver complete national 3D elevation datasets for the United States and Western Europe, Intermap has the proven capability to provide geospatial products and services for a wide range of customers. We understand what it takes to deliver a project on time, within budget, and to your complete satisfaction. We look forward to serving you.

QUICK FACTS

Founded: February 25, 1997

International Headquarters:

Intermap Technologies, Inc.
8310 South Valley Highway, Suite 400
Englewood, CO 80112-5815
United States

Corporate Headquarters:

Intermap Technologies Corp.
635 6th Avenue SW, Suite 500
Calgary, AB T2P 0T5
Canada

Employees: At the end of the first quarter of 2011 (ending March 31, 2011) Intermap had 275 employees

Worldwide offices:

- United States: Denver, Colorado
- Canada: Calgary, Alberta
- Europe: Munich, Germany and Prague, Czech Republic
- Asia, Pacific: Jakarta, Selatan, Indonesia

Stock Symbol: Toronto Stock Exchange (TSX): IMP

Awards:

- 2009 Oracle Spatial Innovator Award for demonstrated innovative use of geospatial technology
- 2009 MAPPs Geospatial Products and Services Excellence Award in the category of Airborne and Satellite Data Acquisition
- 2008 MAPPs Geospatial Products and Services Excellence Awards MAPPs in the category of Airborne and Satellite Data Acquisition
- 2007 MAPPs Geospatial Products and Services Excellence Awards in the category of Photogrammetry / Elevation Data Generation
- 2004 International Society for Photogrammetry and Remote Sensing Congress Gold Prize Award for eLearning training course



Americas Headquarters
Denver, CO, USA
+1 303-708-0955

Europe, Middle East, Africa Headquarters
Munich, Germany
+49 (0) 89 30 90 799-0

Asia, Pacific Headquarters
Jakarta, Indonesia
+62 21 719 3808

www.intermap.com
info@intermap.com