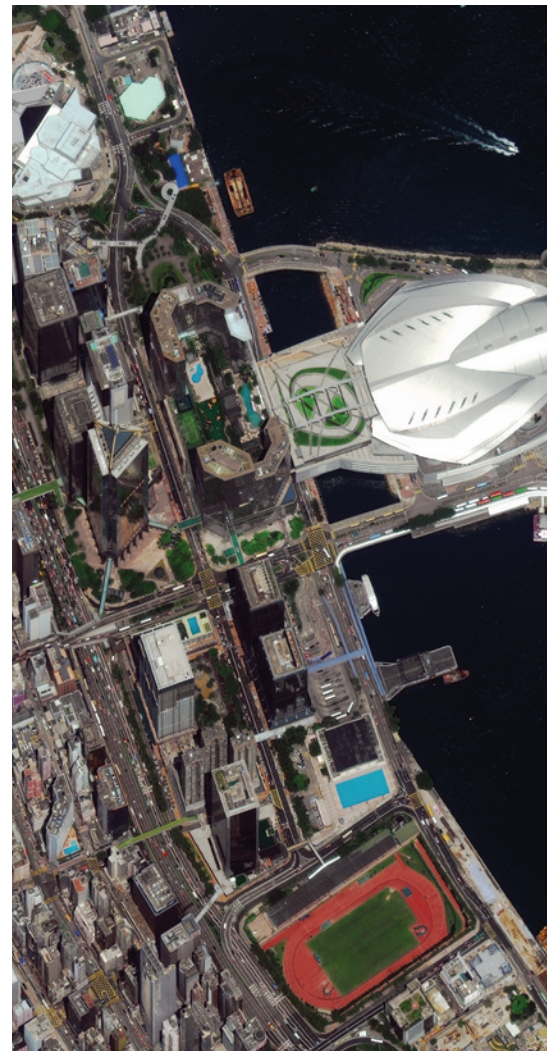


## Standard Imagery

DigitalGlobe's Standard Imagery products are designed for users with knowledge of remote sensing applications and image processing tools that require data of modest absolute geometric accuracy and/or large area coverage. They use DigitalGlobe's constellation of satellites, which include QuickBird, WorldView-1, and WorldView-2. Choose from over two billion km<sup>2</sup> in our archive or submit a new collection request. Standard Imagery products are available in two varieties: Basic Standard and Ortho Ready Standard.

### Features

- Georeferenced to a cartographic projection
  - Industry standard projections and datums
- High resolution
  - 50 cm and 65 cm panchromatic, natural color, color infrared, or 4-band pan sharpened
  - 1.8 m - 2.62 m multispectral
  - 2 m panchromatic **New!**
- Large image swath collection size
  - 16.4 km – 18.0 km width at nadir
- Small minimum order size
  - 25 km<sup>2</sup> (10 mi<sup>2</sup>) – archive and new collects
- Superior image classification and analysis
  - 11-bit digitization (up to 2,048 levels of gray scale)
  - Discrete non-overlapping spectral bands
- Open systems
  - Partnered with commercial software providers
  - Popular image file formats
- Locate features in map coordinate space
- Identify features, create maps, and detect changes from recent global imagery at the highest resolution possible from commercial imaging satellites
- Flexible options - Standard Imagery is normalized for topographic relief and Ortho Ready Standard Imagery is ready for users to orthorectify
- Purchase only the coverage needed for your project and budget
- Improve feature classification and identification in dark or bright areas such as building shadows or snow and perform more flexible image enhancement
- Get your project up and running quickly and easily based on standard map projections and formats



Hong Kong  
Collected May 25, 2010

### Benefits



# Standard Imagery

## Specifications

Product Options		
	Pixel Resolution*	Image Bands
Panchromatic	50 cm, 60 cm, 2.0 m	Panchromatic
Multispectral (4-band)*	2.0 m, 2.4 m	Blue, Green, Red, NIR1
Multispectral (8-band)	2.0 m	Coastal, Blue, Green, Yellow, Red, Red Edge, NIR1, NIR2
Bundle (pan + 4-band)	50 cm, 60 cm	Panchromatic
	2.0 m, 2.4 m	Blue, Green, Red, NIR1
Bundle (pan + 8-band)	50 cm	Panchromatic
	2.0 m	Coastal, Blue, Green, Yellow, Red, Red Edge, NIR1, NIR2
Natural Color	50 cm, 60 cm	Blue, Green, Red
Color Infrared	50 cm, 60 cm	Green, Red, NIR1
4-band Pan Sharpened	50 cm, 60 cm	Blue, Green, Red, NIR1

Spectral Characteristics (nanometers)									
	Coastal	Blue	Green	Yellow	Red	Red Edge	Near-IR1	Near-IR2	Pan (B&W)
QuickBird		430-545	466-620		590-710		715-918		405-1053
WorldView-1									397-905
WorldView-2	396-458	442-515	506-586	584-632	624-694	699-749	765-901	856-1043	447-808

Image Accuracy Specifications	
QuickBird	23 m CE90
WorldView-1 and WorldView-2**	5.0 m CE90

Processing	Standard	Ortho Ready Standard
Applied Corrections	Radiometric, sensor, and geometric corrections Mapped to a cartographic projection	
Geometric Corrections	Projected to a plane using map projection and datum, coarse DEM applied to normalize for topographic relief	Projected to a plane using map projection and datum, projected to a constant base elevation to allow for orthorectification

Order Parameters	
Product Type	Panchromatic, Multispectral, or Bundle; Natural Color; Color Infrared; 4-band Pan Sharpened
Image Bits / Pixel	8 or 16 bits
File Formats	GeoTIFF 1.0, NITF 2.1, NITF 2.0

\* All four bands delivered in a single file

\*\* Up to 30° off nadir

U.S. Regulation requires imagery to be resampled to a minimum of .50 m pan and 2.0 m multispectral.

## Deliverables

Standard Imagery can be acquired directly from the DigitalGlobe archive or you can submit a new collection request. Standard Imagery is ordered by area, with a minimum purchase of 25 km<sup>2</sup> (~10 mi<sup>2</sup>) for archive or tasking orders, up to a maximum of 10,000 km<sup>2</sup> per order. If your order crosses more than one strip, one standard imagery product per scene is delivered. Products are delivered on your choice of standard digital media with Image Support Data files including image metadata.

## Delivery Methods



Media Delivery: DVD



Web-Based Delivery: FTP