

**INTERMAP**  
Answers Now™

# NEXTMAP® WORLD 10™

## Enhanced Global Data

### Seamless Global Coverage

The NEXTMap World 10 digital elevation model provides seamless, best-in-class data to offer both a digital surface model and, at long last, a digital terrain model for the entire world. With a 10-meter ground sampling distance (GSD), World 10 allows for demanding geospatial analyses anywhere in the world, and it represents our most accurate global product ever.

### Key Benefits and Features



#### Worldwide Coverage

100% inclusion of the Earth's entire 150 million square kilometers enable comprehensive analysis.



#### Global DTM

Users can obtain a DTM — with vegetation, buildings, and other features digitally removed — for any location in the world.

### High-Resolution Accuracy

With our patent pending Frequency Fusion process, World 10 has dramatically increased spatial density globally. This allows users to orthorectify higher resolution photos and see more in the DEMs than ever before, enabling improved land planning strategy, better resource management, and the ability to take regional-based engineering projects to the next level.



#### Proprietary Data Filtering

Intermap's Terrain Filter and Frequency Fusion technologies allow us to create the best next-generation global DSM and DTM within our NEXTMap product line.



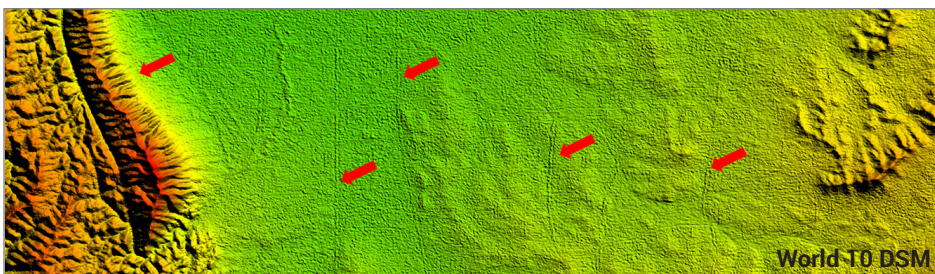
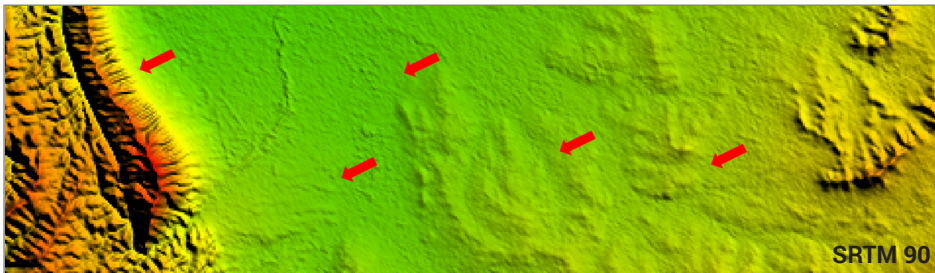
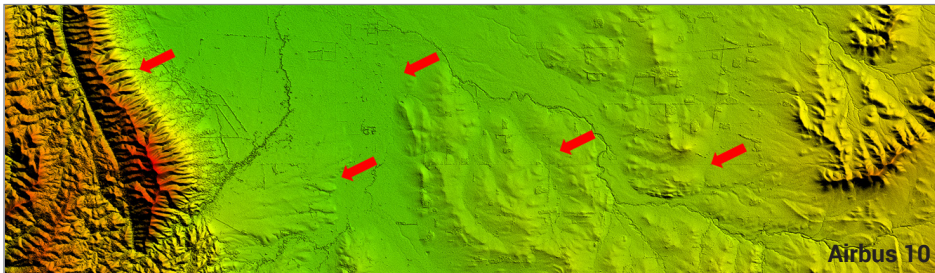
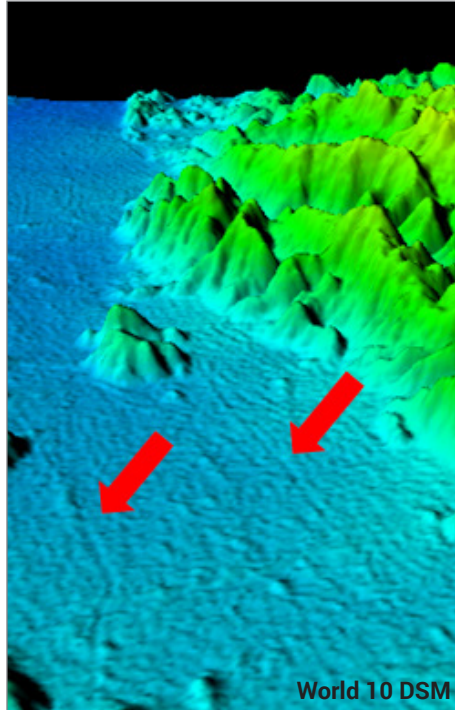
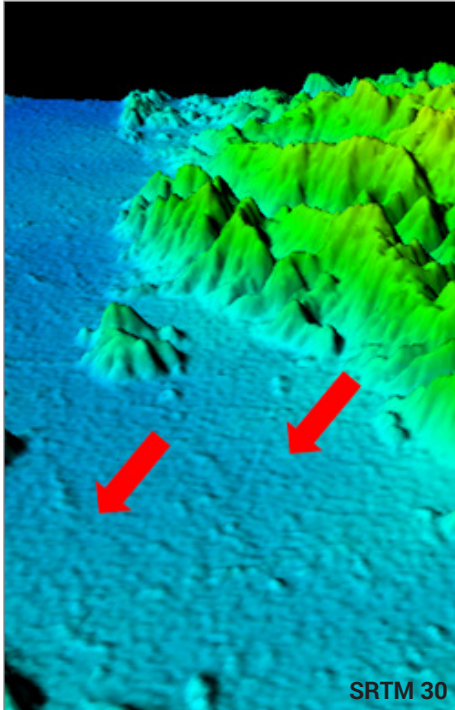
#### Enhanced Terrain Features

World 10 reveals terrain features that are not distinguishable in competitive digital elevation products.



## See What You Have Been Missing:

See what you have been missing as roads and dried river beds that cannot be seen in other digital elevation products — including SRTM90, SRTM30, and others — suddenly appear. Below are just a few examples of terrain features uncovered by World 10.



**INTERMAP**

Answers Now™

Visit [www.intermap.com](http://www.intermap.com)  
or call +1 (303) 708-0955  
for more information.

Intermap Technologies® is a global geospatial solutions leader focused on improving the ways in which people, businesses, and governments use location-based information. Through the creation of the Orion Platform®, the industry's first software-driven spatial data platform, Intermap provides products, services, and solutions that help business and governments solve their geospatial challenges.

Copyright 2015. Intermap Technologies®.  
All Rights Reserved.

[INTERMAP.COM](http://INTERMAP.COM)

## Product Specifications

- Full utilization of patent pending Terrain Filter and Frequency Fusion technologies
- Utilization of global LiDAR for vertical control
- 10m LE95 vertical accuracy
- Geographic projection
- WGS84 horizontal datum
- EGM96 geoid
- 1°x1° tiles
- 32 bit floating point elevations
- File size per 1°x1° cell is ~445MB
- Oceans set to 0 meter
- Flattened water body surfaces between North 60 degrees and South 56 degrees
- Custom data formats and projections available upon request

*GeoSoluciones*