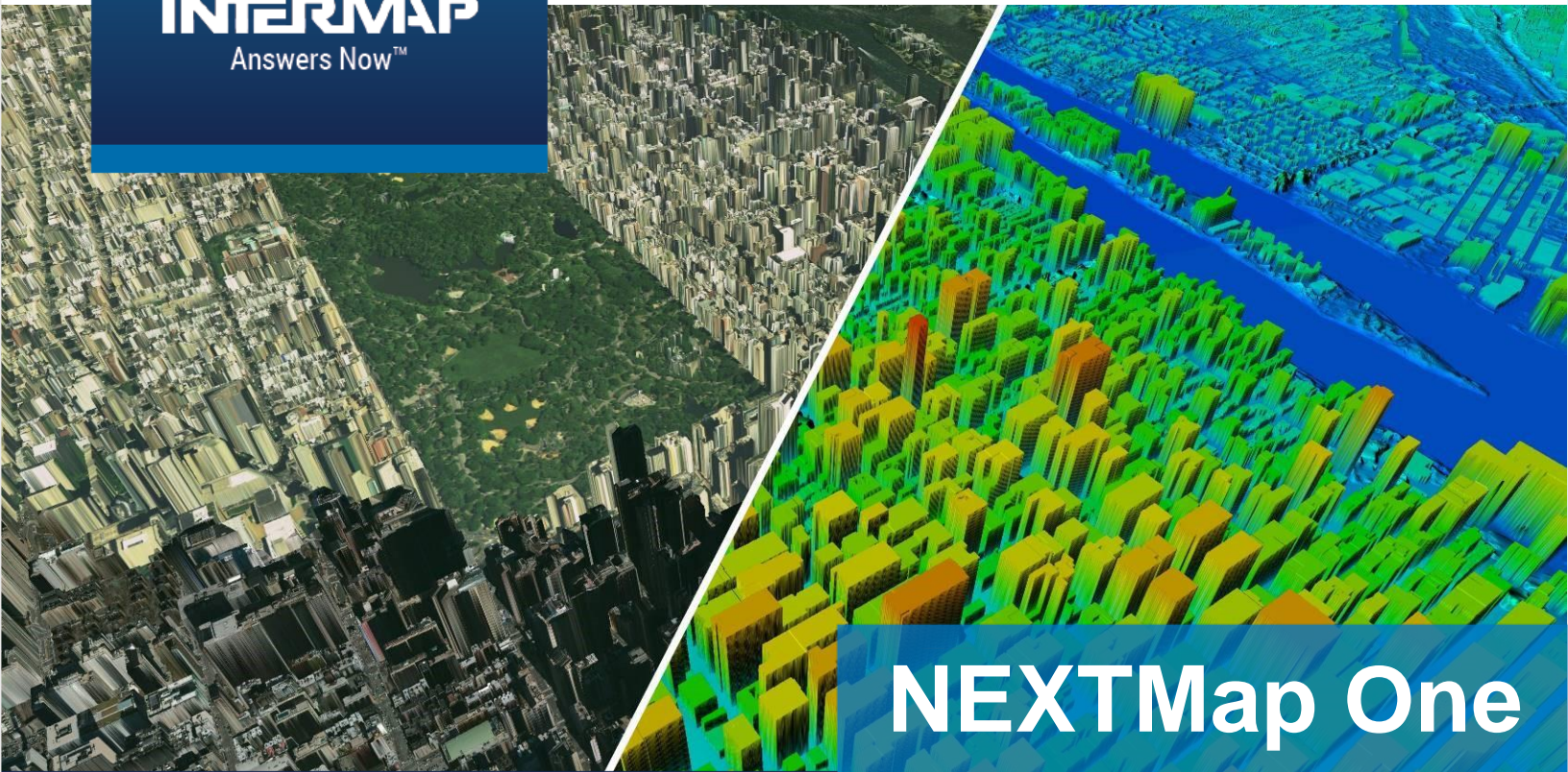


INTERMAP
Answers Now™

NEXTMap One

Worldwide One-meter DSM & DTM Elevation

Accurate and Comprehensive Worldwide Elevation Data

The NEXTMap One digital elevation model is Intermap's next generation global 3D terrain dataset. It provides seamless data at one-meter resolution enabling precise spatial analysis. NEXTMap One is a comprehensive worldwide offering that is available as a digital surface model (DSM) and digital terrain model (DTM). The NEXTMap DSM contains elevations of natural terrain features including vegetation and cultural features such as buildings and roads. The NEXTMap One DTM provides elevations of the bare earth where surface features such as buildings, vegetation and other infrastructure have been removed.

Key Benefits & Features



Global Coverage

NEXTMap One is available for all countries and locations worldwide.



Feature & Bare Earth Models

NEXTMap One DSM with natural terrain features and DTM bare earth.



Stay Current

NEXTMap One data is built with 2016 or newer satellite data.



Spatial Detail & Accuracy

Resolves features at 1m spatial resolution with a vertical accuracy up to 1m LE90.



Hydro Enforced

Water bodies & coastlines are flattened and corrected for accurate measurement.



Limitless Applications

DSM and DTM are ideal for in-depth analysis and can be used in countless applications.

Indispensable Spatial Detail and Accuracy

The NEXTMap One DSM was created using Intermap's newest advanced technology acquisition system that combines the best features from multiple sensors to create a seamless global dataset that is both highly accurate and spatially rich. NEXTMap One is created using Intermap's strict quality management process and provides the user with spatially rich features such as buildings, flattened roads, natural terrain, and is fully hydro enforced.

Limitless Applications

The NEXTMap One DSM and DTM are ideal for in-depth analysis and can be used in countless applications. These include geological mapping, 3D visualization, watershed analysis, emergency response, land cover, forestry, resource conservation, environmental risk analysis, infrastructure planning, image orthorectification, contour generation, and cartography.

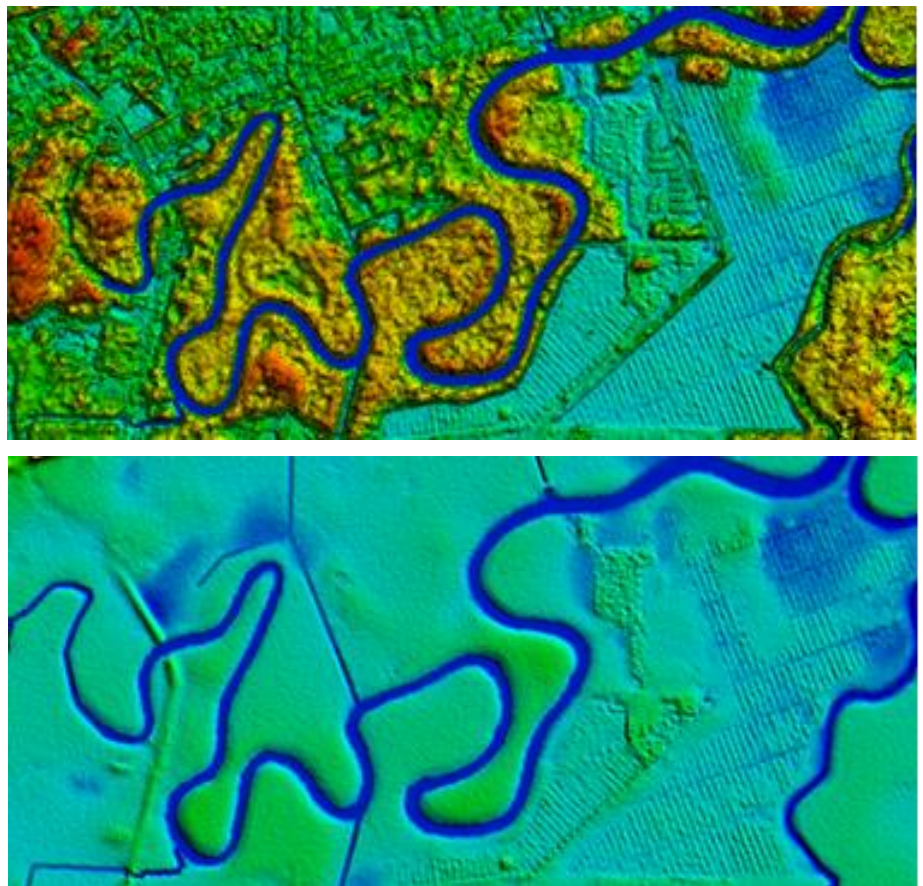
Instant Data Access

Intermap's cloud services enable immediate access to data products and services for your area of interest via subscription. With our products and services hosted in the cloud, costs and resources associated with large data storage can be eliminated.

Additional data sets, online tools, and analytics are also available to perform analyses from any web browser to enable better terrain-based decisions without the overhead from GIS software.

NEXTMap One DSM and DTM are available through the standard Open Geospatial Consortium (OGC), Web Coverage Service (WCS), and Web Map Service (WMS) protocol that is compatible with hundreds of third party tools and applications.

NEXTMap One DSM (top) and DTM (bottom) in Pahang, Malaysia



INTERMAP

Answers Now™

Visit www.intermap.com
or call +1 (303) 708-0955
for more information.

Intermap Technologies® is an industry leader serving a diverse geospatial marketplace. We provide highly accurate geospatial information to help commercial enterprises and government agencies make better location-based decisions.

Copyright 2018. Intermap Technologies®.
All Rights Reserved.

INTERMAP.COM

NEXTMap® Data Subscriptions are available now. Contact Intermap to access free demo datasets and analytics today!

www.geosoluciones.cl
+562 22091431