



Experience the Power of Professional Mapping

GIS SOFTWARE FOR EVERYONE

Global Mapper is a powerful and affordable GIS application that combines a comprehensive array of spatial data processing tools with access to an unparalleled variety of data formats. Developed for both GIS professionals and map enthusiasts, this versatile software package is equally well suited as a standalone GIS data management tool or as a complement to an established GIS setup.



Marlette Lake overlooking Sand Harbor, Lake Tahoe
Image created by Steven McQuinn using data from OpenTopography.org and The USDA National Agricultural Imagery Program

CREATE BETTER MAPS WITH GLOBAL MAPPER

- Import and display most vector, raster, and elevation datasets
- Expose the spatial characteristics of the data with powerful analytical tools
- Edit, convert, mosaic, reproject, and print stunning maps
- Export and share data with most GIS or CAD systems
- Available network licensing provides multi-seat users with an efficient checkout or borrowing process allowing easier access to the software across entire organizations

DATA ACCESS!

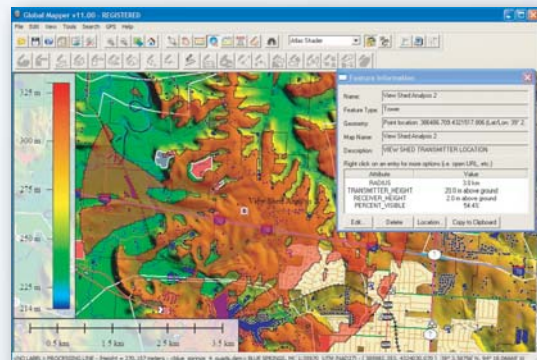
Global Mapper's data support is second to none. Virtually any vector, raster, or elevation dataset can be easily imported, displayed, and manipulated. Built-in WMS support offers direct access to countless online data servers providing imagery, topographic maps, and elevation datasets for the entire world. Preconfigured data connections include the USGS 10m and 30m NED datasets, high-resolution imagery from DigitalGlobe, worldwide OpenStreetMap tiles, and Landsat Satellite Imagery. Global Mapper's rectification tool allows any supported image file or PDF to be imported and registered creating a geographically aligned raster layer.

3D MODELING

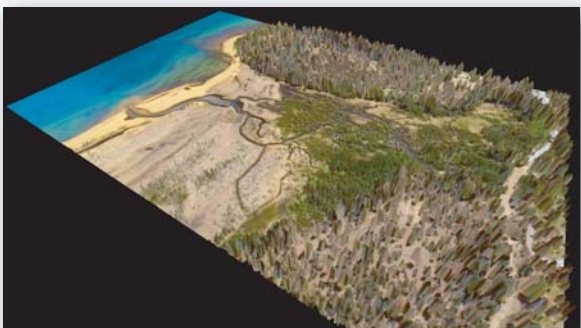
Utilizing imported elevation data, Global Mapper offers the ability to render any dataset as a 3-D terrain model. Customizable hill shading accentuates the topography while providing a realistic perspective to any visible layer. 3-D analysis capabilities include viewshed calculation, line-of-site generation, watershed analysis, and custom contour creation.

GPS SUPPORT

Connect a compatible GPS receiver to a laptop or mobile computer and Global Mapper will display the current position superimposed on any imported or created layer. Use this location-based functionality to record movement in a track file or tag specific locations as waypoints. Global Mapper will even read the GPS-derived location information imbedded in many digital photographs and automatically assign a link to each photograph at the precise location at which it was taken.



View Shed Analysis



The mouth of Taylor Creek, South Lake Tahoe
Image created by Steven McQuinn using data from OpenTopography.org and The USDA National Agricultural Imagery Program

POWERFUL DIGITIZING TOOLS

Global Mapper's impressive suite of digitization tools provides the means to create or edit vector data in a wide variety of formats. Points, lines, and polygons can be drawn in freehand form, with precise distance and bearing (COGO) input, or using the included rectangle, ellipse, buffer, or range ring functions. Use the symbolization tools to customize the appearance of vector features or to represent an inherent attribute of each feature.

WHY GLOBAL MAPPER?

Global Mapper is a fully fledged GIS data management suite that is powerful enough to satisfy the needs of GIS professionals yet affordable enough for casual map users. It offers access to data in any common spatial format and includes an extensive collection of GIS tools in an easy-to-learn package, backed up by unlimited technical support.

Download a free trial at globalmapper.com and discover why Global Mapper will change the way you think about GIS. Email gmorders@bluemarblegeo.com for more information.



BLUE MARBLE GEOGRAPHICS

MIND THE GAP BETWEEN WORLD AND MAP

397 WATER STREET, SUITE 100 GARDINER, MAINE 04345 USA
800.616.2725 / +1.207.582.6747 / FAX: 207.582.7001
44° 13' 49.50" N, 69° 46' 32" W, WGS84

BLUEMARBLEGEO.COM / GLOBALMAPPER.COM

GRIDDED ELEVATION FORMATS

- ACE/ACE2 (Altimeter Corrected Elevation)
- ASPRS LIDAR LAS Files
- ASTER DEM and L1A/L1B Imagery and MODIS imagery
- Arc/Info ASCII Grid
- Arc/Info Binary Grid
- Arc/Info Export Format (E00)
- BAG (Bathymetry Attributed Grid) Files
- BIL/BSQ/BIP/RAW Imagery
- BT (Binary Terrain) Elevation Grid Files
- BigTIFF
- COLLADA 3D Models
- CORTAD (Coral Reef Temperature Anomaly)
- CPS-3 Grid Format
- Canada 3D Files
- Canadian Digital Elevation Data (CDED)
- Carlson SurvCAD Grid File
- DHM - Swiss DEM Files
- DTED (Digital Terrain Elevation Data) Format
- Digital Bathymetric Data Base Variable Resolution (DBDB-V)
- ERDAS Imagine Image Format
- FAA INM 3TX Format
- GLOBE (Global Land 1-km Base Elevation)
- GSD (Swedish DEM Grid) Files
- GXF (Geosoft ASCII Grid) Files
- Geodas Grid (GRD98) Format
- Geosoft Binary Grid Files
- Global 2' Elevation Data (ETOPO2)
- Global 30-arc-second Digital Elevation Data (GTOPO30)
- Gravsoft Grid Files
- HF2/HFZ Files
- HRE - High Resolution Elevation Format
- HTF (Hydrographic Transfer Format)
- Hypack Matrix Files
- IGF DIS Terrain Files
- Idrisi Format
- International Bathymetric Chart of the Arctic Ocean (IBCAO) Files
- JPEG2000 Files
- Japanese DEM (JDEM/LEM/CSV) Format
- LIDAR LAZ (Compressed LAS) Files
- LizardTech MrSID MG4 Lidar
- Micropath 3CD Format
- NMGF (Noise Model Grid Format)
- NOAA TerrainBase Elevation Data
- NOAA/NGS Geoid Model Format
- NTF Grid/Contour Format
- PDS (Vicar) Files
- PLS-CADD XYZ Files
- Pathfinder AVHRR (Sea Surface Temperature)
- QCT (Quick Chart) and QED Files
- SRTM (Shuttle Radar Topography Mission) Files
- STL Files
- Surfer Grid (ASCII and Binary) Format Files
- TRMM (Tropical Rainfall Measuring Mission) HDF5 Files
- TerraScan .bin/.ts Format
- Terragen Terrain Format
- USGS Digital Elevation Model (DEM)
- USGS Digital Elevation Model, GeoTIFF Format
- USGS Digital Elevation Model, Spatial Data Transfer Standard Format (DEM/SDTS)
- USGS National Elevation Dataset (NED) - ArcGrid, BIL, Grid Float Format
- Vertical Mapper (MapInfo) Grid/Clutter Files
- Vulcan3D Triangulation (.00t) Files
- WindSim GWS
- Zmap Plus Grid Files

RASTER FORMATS

- ADRG Files
- ARCS (British Admiralty) Marine Charts
- ASRP (Arc Standard Raster Product) and USRP Files
- ASTER DEM and L1A/L1B Imagery and MODIS imagery
- BIL/BSQ/BIP/RAW Imagery
- BSB Nautical Charts
- BigTIFF
- CADRG and CIB Files
- ERDAS Imagine Image Format
- Enhanced Compressed Wavelet (ECW)
- Erdas GIS/LAN Files
- GRIB I and II Formats
- GeoPDF® Files
- HCRF (Hydrographic Chart Raster Format)
- Idrisi Format
- Intergraph COT Format
- JPEG Image with Embedded EXIF Position Information
- JPEG Image with World File
- JPEG2000 Files
- KML/KMZ Formats
- Landsat 7A FAST Format
- LizardTech MrSID Data
- MPR/MPH (German Topo Map) Files
- MapTech Nautical Charts (PCX Format)
- MapTech Topo Maps and Aerial Navigation Charts
- NITF - National Imagery Transmission Format
- NOS/GEO Marine Charts
- NV Verlag Marine Charts
- OziExplorer OZFx2 and OZFx3 Formats
- PCX Files
- PGM Grayscale Grid Format
- PNG Image with World File
- OCT (Quick Chart) and QED Files
- RIK (Swedish Topo Map) Files
- USGS Digital Orthophoto Quads (DOQ), GeoTIFF Format
- USGS Digital Orthophoto Quads (DOQ), JPG w/ Native Header Format
- USGS Digital Orthophoto Quads (DOQ), Native USGS Format
- USGS Digital Raster Graphic (DRG)
- Vertical Mapper (MapInfo) Grid/Clutter Files
- Zoomify Format

VECTOR FORMATS

- ASPRS LIDAR LAS Files
- ATLAS BNA (Boundary File)
- Alberta Township System (ATS) Format
- Anuga Triangulated Mesh Format
- Arc/Info Export Format (E00)
- AutoCAD DWG (DraWinG) File
- AutoCAD DXF (Drawing Interchange File)
- CDF (GES Cartographic Data Format)
- CML, CXF, and TAF (Italian Cadastral Exchange Formats)
- COLLADA 3D Models
- CompeGPS RTE, TRK, and WPT Formats
- DBF (DBase III+) Files
- DMDF (Digital Map Data Format) Format
- DeLorme Text Files

(continued)

VECTOR FORMATS

- (continued)
- Delft3D (LDB) Files
 - EMF (Windows Enhanced Metafile) Format
 - ESRI File Geodatabase Format
 - ESRI Personal Geodatabase Format (MDB)
 - ESRI Shapefiles
 - FCC Antenna Structure Registration (ASR)
 - GML (Geography Markup Language) Format
 - GPS TrackMaker
 - GPX (GPS eXchange Format) Files
 - Garmin PCX5 Format Waypoint (WPT), Route (RTE), and Track (TRK) Files
 - Garmin TCX (Training Center Database) Files
 - GeoJSON Format
 - GeoPDF® Files
 - HTF (Hydrographic Transfer Format)
 - Hypack LNW (Planned Line) Files
 - Idrisi Vector (VCT) Format
 - JPEG Image with Embedded EXIF Position Information
 - KML/KMZ Formats
 - LIDAR LAZ (Compressed LAS) Files
 - LMN (Spectra Line Management Node) Files
 - LandXML
 - LizardTech MrSID MG4 Lidar
 - Lowrance LCM (MapCreate) Format
 - Lowrance SonarViewer Format
 - Lowrance USR
 - MagicMaps IKT Files
 - MapInfo MIF/MID and TAB/MAP Formats
 - MapMaker DRA (Drawing) Files
 - Marplot MIE Files
 - MicroStation DGN Format
 - NIMA GNS (GeoNet Names Server) Format
 - NMGF (Noise Model Grid Format)
 - NOAA DSDATA Geodetic Control, SDTS Format
 - NTF Grid/Contour Format
 - OCAD .OCD Files
 - OpenStreetMap (OSM) Files
 - Orca XML
 - OziExplorer Waypoint (WPT), Route (RTE), and Track (PLT) Files
 - PLS-CADD XYZ Files
 - Platte River ASCII Digitizer Format
 - Polish MP (cGPSMapper) Format
 - S-57 Digital Chart Files
 - S-63 Encrypted Digital Chart Files
 - SEG1/UKOOA Seismic Shotpoint Format
 - SEG2/UKOOA Seismic Shotpoint Format
 - SMT KINGDOM Software Planimetric Polygon Format
 - SOSI Files
 - SPS (Shell Processing Support)
 - STL Files
 - Surfer BLN Files
 - TAF (Italian Cadastral Exchange Format)
 - TIGER/Line Files
 - Tobin .bas (TDRBM II) Format
 - TomTom OV2 Files
 - USGS Digital Line Graph, Optional Format (DLG-O)
 - USGS Digital Line Graph, Spatial Data Transfer Standard Format (DLG/SDTS)
 - USGS Geographic Names Information System (GNIS)
 - USGS Land Use and Land Cover Data (LULC)
 - VPF (VMAPO, VMAP1, DNC) Files
 - Vulcan3D Triangulation (.00t) Files
 - WASP .MAP Format
 - XTF (eXtended Triton) Format



BLUE MARBLE GEOGRAPHICS

MIND THE GAP BETWEEN WORLD AND MAP

397 WATER STREET, SUITE 100 GARDINER, MAINE 04345 USA
800.616.2725 / +1.207.582.6747 / FAX: 207.582.7001
44° 13' 49.50" N, 69° 46' 32" W, WGS84

BLUEMARBLEGEO.COM / GLOBALMAPPER.COM