

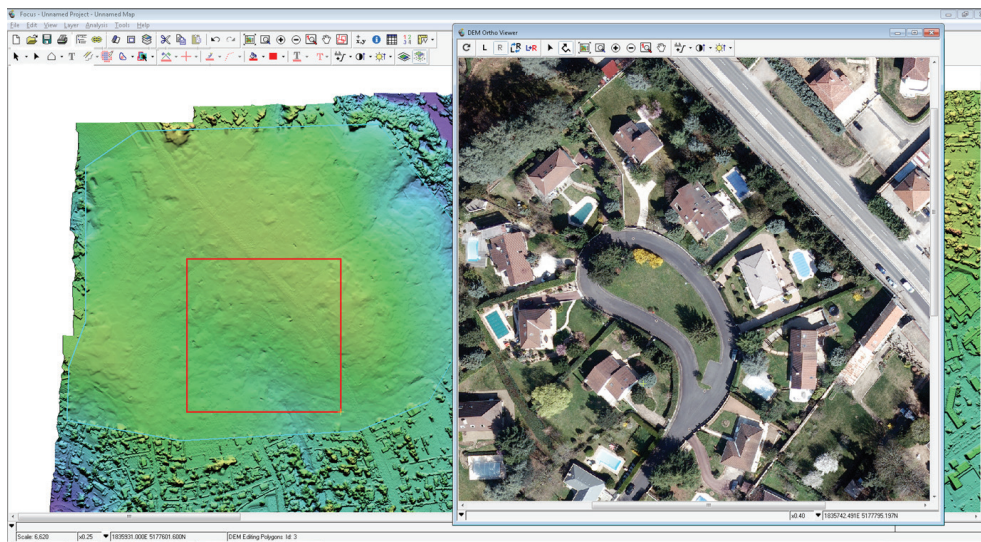
GEOMATICA

With thousands of installations in over 130 countries, Geomatica has established itself as the software geospatial professionals around the world trust to solve problems quickly and effectively. Geomatica 2014 continues this legacy with new features that will challenge the way you think about your current image processing workflow.

Geomatica 2014 adds many new tools and functions to further streamline operational workflows. Combined with improvements to key algorithms, new wizard-based functions, and an expanded list of supported sensors; Geomatica 2014 is our most ambitious release yet.

Live DEM Editing

See and edit DTM errors in an ortho-preview that updates in real-time. You immediately see the results of your edits, so there is no need to wait for a full ortho to be produced and checked. Editing is very fast and replaces the 3D stereo requirement, and lengthy scene regeneration and rechecking found in other software. This results in a dramatic reduction in cost and much faster turnaround.



See an instant ortho-preview of your DTM edits with Live DEM Editing

Python Scripting

Script your Geomatica image processing and combine it with other tasks in Python to streamline your data management applications, generate intelligent business products, or customize your output. See how to leverage your imagery for use in ArcGIS and other GIS applications.

Highlights

- **Live DEM Editing**
A new, more efficient way to produce terrain models for ortho-mosaics
- **Smart Geo-fill**
An advanced, geospatially intelligent copy/paste tool to rapidly improve imagery. Enhance and retouch ortho-mosaics while maintaining full geo-referencing, channel combinations and bit-depth.
- **Python Scripting**
Use the powerful, free, and open-source scripting software to leverage your imagery for use in ArcGIS and other GIS applications

GeoSoluciones

Platform Support

Geomatica is available on the following platforms:



Windows

Vendor	Microsoft
Hardware	Intel/AMD x86_64 64-bit,
Supported Versions	Windows XP/ Windows 7/ Server 2003/ Server 2008/ Server 2012/ Windows 8

Linux

Vendor	Various
Hardware	Intel/AMD x86_64 64bit
Supported Versions	Red Hat 6 / Ubuntu 10.04 / SUSE 11.2 & 12

Note: Multiple Processors and Hyper-threading

Functionality in Geomatica 2014 has been designed specifically to take advantage of multiple processor machines and hyperthreading. For a list of those supported, please contact PCI Geomatics.

Note: Linux Support

Linux software has been tested on the following systems; SUSE 11.2, SUSE 12, Red Hat 6, Ubuntu 10.04 LTS, and Ubuntu 12.04 LTS. If your version of Linux is compatible with the listed glibc and gcc versions, you should be able to install and run the software, but PCI has not tested all possible flavors.



PCI Geomatics Headquarters
50 West Wilmot Street, Suite 100
Richmond Hill, Ontario
Canada, L4B 1M5
Phone: (905) 764-0614
Fax: (905) 764-9604
Email: info@pcigeomatics.com
Web: www.pcigeomatics.com

Smart Geo-fill

An advanced, geospatially intelligent copy/paste tool to rapidly improve imagery. Enhance and retouch ortho-mosaics while maintaining full geo-referencing, channel combinations and bit-depth. By using simple polygon selection in your imagery, you can select, copy and paste the best parts of the best images for your final mosaic. This new feature extends Geomatica's DEM and ortho-mosaic production, or can be used to enhance other types of overlapping images.



Leave consumer-grade image editors behind with Smart Geo-fill and maintain full bit-depth and georeferencing in your image touch ups.

True Ortho

Building lean in aerial imagery can obscure important details in your imagery. With True Ortho, there is only a true, top-down view of your entire mosaic. Through the use of building models, PCI's aerial processing software can produce True Ortho imagery – ideal for use in urban areas to eliminate building lean and feature obstruction. Automated methods are applied to the imagery pairs to determine the best possible viewing geometry and inclusion in the final mosaic.

Industry-leading Sensor and Format Support

Sensor support Updates:

- Spot 6
- RASAT
- KOMPSAT-3
- TH-1
- Landsat 8
- Gokturk2
- HJ-A/B/C
- ZY-3
- GF1
- GF2
- YG2
- YG8
- YG14
- SJ9

GDB Improvements:

- QuickBird/WV1/WV2 format (CDQB)
- Ikonos/GeoEye format (CDIKONOS)
- Landsat format (CDLAND7)
- SPOT-5 (CDSPOT5)
- Old Landsat data in new style (4236-38)
- CBERS 2B

