



Eye4Software Hydromagic

Hydrographic Survey Software for Windows

→ Introduction

Hydromagic is a single beam hydrographic survey package with a very small learning curve. In other words, you are not supposed to take a week training in order to perform your first survey.

→ Applications

The software is designed for performing hydrographic surveys, but can as well be used for positioning (dredging) vessels or barges, navigating on ECDIS maps or in the fishing industry, to navigate into fishing parcels.

→ Features

The key features of the Hydromagic software package include:

- ✓ Built in editing and filtering of singlebeam soundings;
- ✓ Support for IHO S57 and S63 nautical charts;
- ✓ Automatic tide correction using RTK;
- ✓ Support for NADCON, HARN and NTV2 correction grids;
- ✓ Generation of regularly spaced data using TIN;
- ✓ Generation of depth contours;
- ✓ Volume calculation of ponds or basins;
- ✓ Volume calculation between dredge operations;
- ✓ Generate graphical view of channel cross sections;
- ✓ Vast number of exporting options;
- ✓ Built-in map downloader;
- ✓ Use dynamic corrections like draft and sound velocity;
- ✓ AIS Display;

→ Hardware

Hydromagic will work with all ranges of hardware. You can use everything from a simple fishfinder and GPS device to an hydrographic echosounder with RTK receiver.

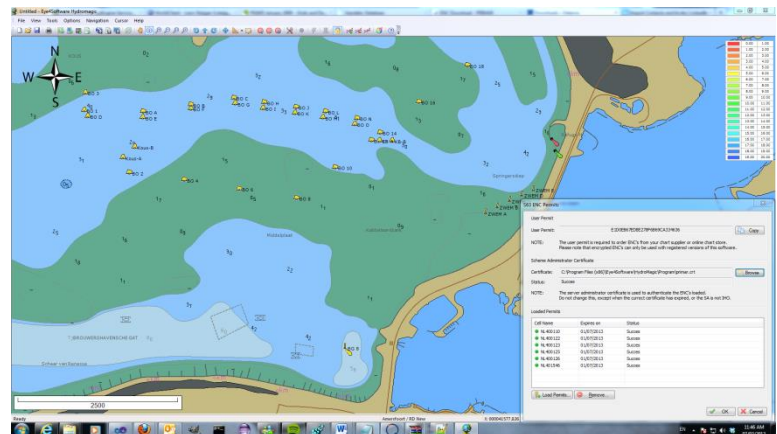
Support for new hardware can be added ,without reinstallation of the software, by the use of plugins.

To run the software, a PC running Microsoft Windows XP SP 3 or higher is required.

→ Background maps

A large number of map formats can be imported into your projects, which allows you to use map data from virtually any source. Supported map formats include:

- ✓ S57 ENC's (unencrypted);
- ✓ S63 ENC's (encrypted);
- ✓ BSB Nautical Maps;
- ✓ GeoTIFF files;
- ✓ AutoCAD DXF files;
- ✓ Microstation DGN files;
- ✓ ESRI Shape files;
- ✓ MapInfo MIF/MID or TAB files;
- ✓ ARC/INFO export and coverage files;
- ✓ IDRISI vector files;
- ✓ Google KML files;
- ✓ and many more...



When a map is not available for your area, just use the built-in map downloader to download streetmap data or satellite imagery, by entering the coordinates of the area to be surveyed.

→ Geodesy

The software ships with a database containing more then 5000 local map projections around the world, which means that the software can be used in any country.

Also sophisticated vertical and horizontal datum shifts like NADCON, NTV2, HARN/HPGN and VERTCON are supported.



Eye4Software Hydromagic

Hydrographic Survey Software for Windows

→ RTK tide calculation

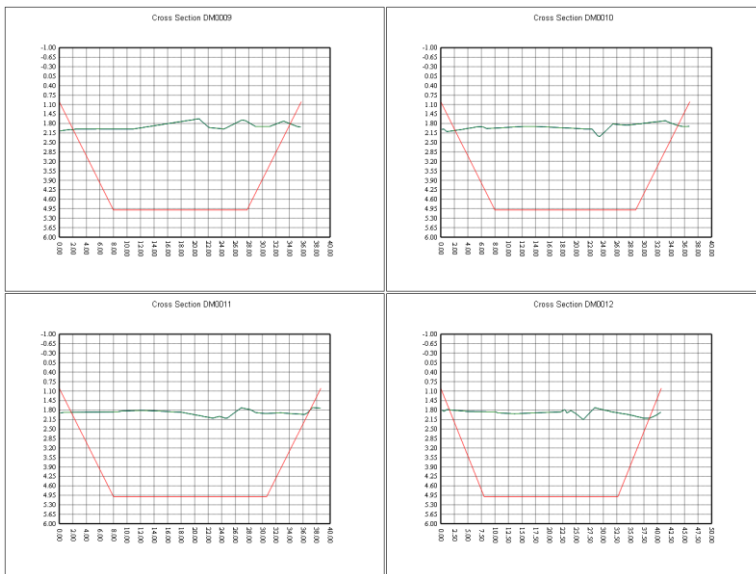
By using a RTK receiver combined with one of the built-in geoid models, Hydromagic can calculate the current tide level in real time. Using this feature, there is no need to use a tide gauge or tide tables.

→ Volume calculation

Hydromagic offers multiple methods to calculate volumes. You can calculate the volume of a pond or basin by comparing the sounding to the water surface.

For dredging operations, it is also possible to calculate the difference in volume between the pre-dredge and post-dredge sounding.

It is also possible to calculate volumes by the use of cross sections. A detailed volume report can be exported as text file with cross section images.



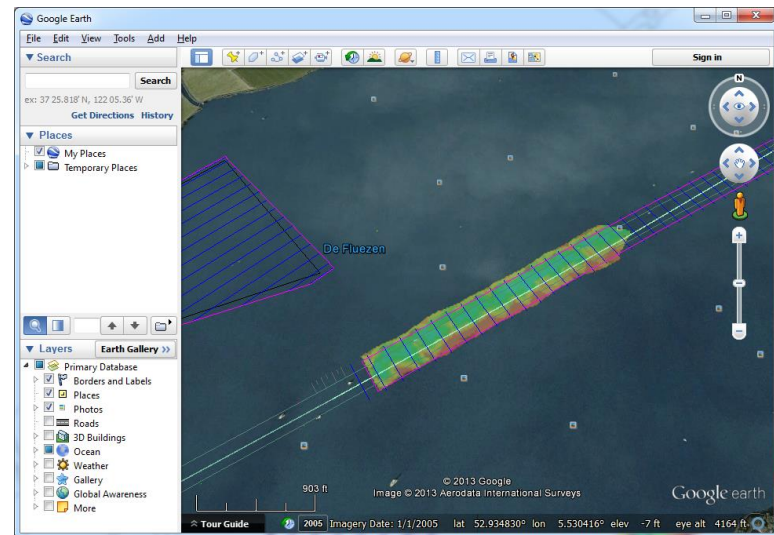
→ Export formats

In Hydromagic, the corrected and processed sounding data can be exported in different ways.

Data can be exported to user defined ASCII, ASCII XYZ, Google Earth KML/KMZ, AutoCAD DXF and more.

You can use the ASCII export function to export the raw sounding data. This utility let you choose the fields to export.

Use the KML export function to display your sounding and final product as Google Earth overlay file



→ Free Demo

A free demo version can be downloaded from our website free of charge:

<http://www.eye4software.com/download>.

→ More information

For more information on this software, visit our website at <http://www.eye4software.com> or contact your local dealer.

GeoSoluciones

info@geosoluciones.cl